

# GR2000LH






MSDS



UN38.3



## Features

 <b>Ultimate Reliable</b>	 <b>Maximum Efficiency</b>	 <b>Infinite Flexibility</b>
<ul style="list-style-type: none"> <li>➤ LFP batteries, multiple detection and monitoring</li> <li>➤ Compliant with international standard certification</li> <li>➤ High protection up to IP55 and C4H anti-corrosion level</li> <li>➤ Multi-level fire protection and battery protection</li> </ul>	<ul style="list-style-type: none"> <li>➤ Smart liquid cooling system for efficient dissipation</li> <li>➤ Automatic optimal EMS strategy control for best efficiency</li> <li>➤ Self-developed BMS and EMS, project-level customization</li> <li>➤ Integrate artificial intelligence algorithms</li> </ul>	<ul style="list-style-type: none"> <li>➤ All-in-one design with battery, PCS, transformer and STS</li> <li>➤ Scalable parallel support for multiple systems</li> <li>➤ Cloud O&amp;M, fast fault analysis and handling</li> <li>➤ Support PV AC/DC coupling, on/off grid switch ≤20ms</li> </ul>

- 22F, BTR New Energy Technology Building,Guangyuan 2 Road, Guangming, Shenzhen
- Tel: (86)0755-88658100 E-mail: [sales@gooree.com](mailto:sales@gooree.com)
- Web : <https://en.gooree.com>

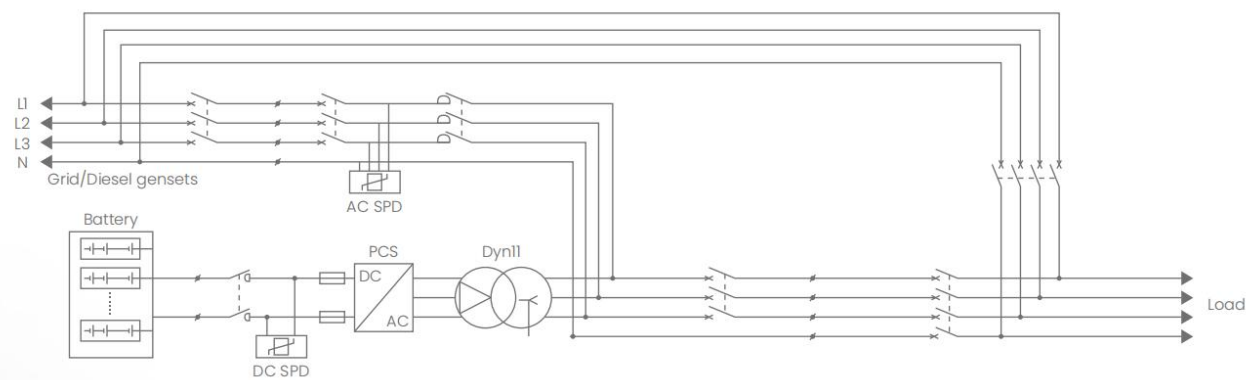


 Facebook



 LinkedIn

# Electrical Diagram



# Specification Parameters

Model	GR2000LH
<b>DC Side</b>	
Cell type	LFP / 314Ah
Battery capacity (BOL)	2089 kWh
System configuration	(52S1P) 5S * 8
Rated DC voltage	832 V
DC voltage range	702 ~ 949 V
Charge/discharge rate	≤0.5P
Cooling Method	Liquid cooling
<b>AC Side</b>	
Rated AC power	1000 kW
Max AC power	1100 kW
Rated AC voltage	400 / 480 V
Rated frequency	50 / 60 Hz
AC connection	3P + N + PE
STS (Optional)	1000 kVA
<b>System Parameter</b>	
Demension(W*H*D)	6058 * 2896 * 2438 mm
Weight	≤ 25 T
Cycle performance	≥ 6000 cycles; @ 25 ± 2 °C, 0.5P, SOH ≥ 80%
System Efficiency	≥ 88% (Including subsidiary Power Consumption)
Fire suppression system	Aerosol / NOVEC1230 / FM200 (Support PACK level) + Flammable Gas Detection + Exhaust + Water Sprinkler System
Operating ambient temperature range	-30~55°C (-30~-20°C with Heater)
Max operating altitude	4,000m (de-rate between 2000-4000m)
Max IP rating	IP55
Communication Protocol	Modbus, 4G (MQTT)
Remote monitoring	Cloud EMS, Mobile APP
Max Anti-corrosion Level	C4H
Certifications	UN38.3, IEC62619, IEC62477, IEC61000, EN50549
Application scenarios	On-grid & off-grid, Industrial and commercial energy storage, Micro-grid, Emergency power backup