

GR261LH



MSDS



UN38.3



Features



Ultimate Reliable

- LFP batteries, multiple detection and monitoring
- Compliant with international standard certification
- High protection up to IP55 and C4H anti-corrosion level
- Multi-level fire protection and battery protection



Maximum Efficiency

- Smart liquid Cooling System for efficient dissipation
- Automatic optimal EMS strategy control for best efficiency
- Self-developed BMS and EMS, project-level customization
- Integrate artificial intelligence algorithms



Infinite Flexibility

- All-in-one design, integrated battery, PCS, MPPT and STS
- Scalable parallel support for multiple systems
- Cloud O&M, fast fault analysis and handling
- Multi-Scene Use: Support PV access and on/off grid switch $\leq 20\text{ms}$

- 22F, BTR New Energy Technology Building,Guangyuan 2 Road, Guangming, Shenzhen
- Tel: (86)0755-88658100 E-mail: sales@gooree.com
- Web : <https://en.gooree.com>

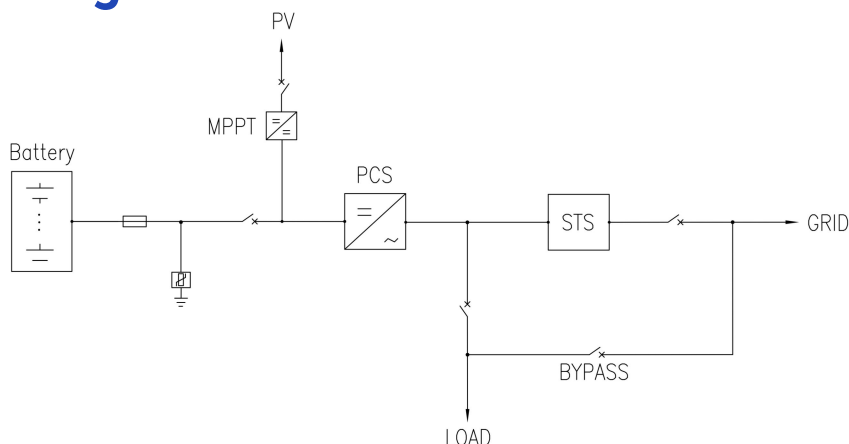


Facebook



LinkedIn

Electrical Diagram



Specification Parameters

Model	GR261LH
DC Side	
Cell type	LFP / 314Ah
Battery capacity (BOL)	261.24 kWh
System configuration	(52S1P) 5S * 1
Rated DC voltage	832 V
DC voltage range	702 ~ 949 V
Charge/discharge rate	≤0.5P
Cooling Method	Liquid cooling
PV Side	
Rated MPPT power	120kW
Number of MPPT inputs	2
PV Open-Circuit Voltage	200~900V
MPPT voltage range	200~850V
Rated voltage	600V
PV Start-up Voltage	250V
Max PV current	100A+100A
AC Side	
Rated AC power	130 kW / 125 kW / 124.9 kW / 100kW / 99.9 kW (Optional)
Rated AC voltage	400 V
Rated frequency	50 / 60 Hz
AC connection	3W+PE / 3W+N+PE
Rated STS capacity	300kVA
System Parameter	
Demension(W*H*D)	1350 * 2350 * 1500 mm
Weight	≤ 2800 kg
Cycle performance	≥ 6000 cycles: @ 25 ± 2 °C, 0.5P, SOH ≥ 80%
System Efficiency	≥ 88% (Including subsidiary Power Consumption)
Fire suppression system	Aerosol / NOVEC1230 / FM200 (Support PACK level) + Flammable Gas Detection + Exhaust + Water Sprinkler System
Operating ambient temperature range	-30~55°C (-30~-20°C with Heater)
Max operating altitude	4,000m (de-rate between 2000~4000m.)
Max IP rating	IP55
Remote monitoring	Cloud EMS, Mobile APP
Certifications	UN38.3, IEC62619, IEC62477, IEC61000, EN50549
Application scenarios	On-grid & off-grid, Industrial and commercial energy storage, Micro-grid, Emergency power backup